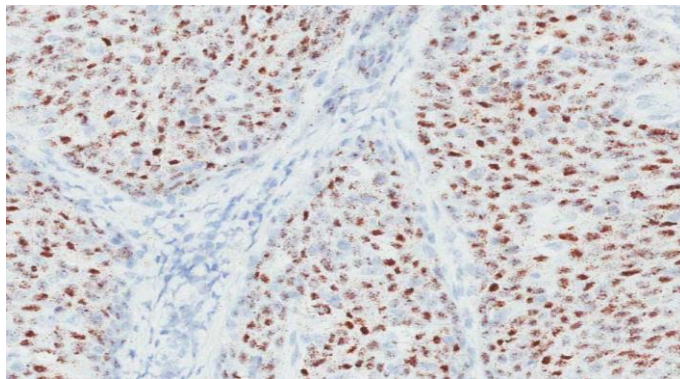


*A Tradition of Excellence*

---

## **HEAD & NECK PATHOLOGY SERVICES**

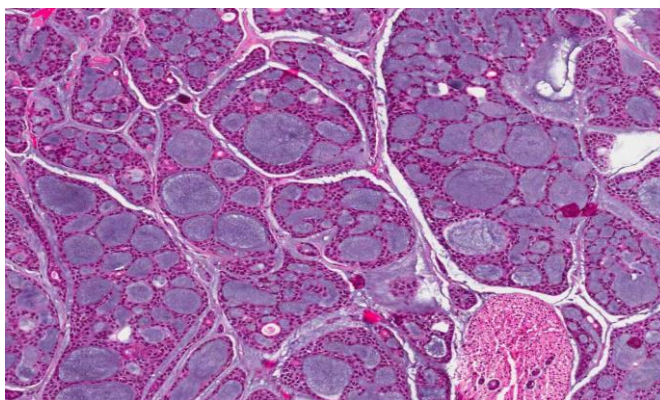
---



Positive High Risk HPV mRNA ISH

*The Vanderbilt University Medical Center head and neck pathology team, led by James (Jim) Lewis Jr. MD, offers diagnostic expertise in the many complex areas of head and neck specimens. The team provides quick turn-around on diagnostic procedures, personalized reporting, and is available for telephone consultation with referring pathologists and clinicians.*

*Dr. Lewis has presented nationally and internationally on head and neck cancer and HPV, and he is part of both the College of American Pathologists "HPV Testing in Head and Neck Lesions" and also the "Head and Neck Biomarker Reporting" committees. He is specifically available for consultation regarding need, type, and reporting of ancillary tests in head and neck pathology.*



Adenoid Cystic Carcinoma

*For more information on available services, please call VPLS at 1-800-551-5227, or visit on-line at: [www.labVU.com](http://www.labVU.com)*

## HEAD & NECK PATHOLOGY SERVICES

VPLS offers a wide-range of head and neck pathology-related testing and consultation services. We will work with your institution to provide the highest quality services to your patients and physicians.

Our testing services include evaluation of:

**Bone and Soft Tissue**

**Neck Masses**

**p16 & HPV Testing**

**Sinonasal Lesions**

**Mucosal-Based Lesions**

**Odontogenic Lesions**

**Salivary Gland Lesions**

**Thyroid & Parathyroid Lesions**

### **Recent Publications by Dr. Lewis Related to Head and Neck Pathology:**

*Bishop, JA, Lewis, JS Jr., Rocco, JW, Faquin, WC. HPV-related squamous cell carcinoma of the head and neck: An update on testing in routine pathology practice. Semin Diagn Pathol, e-pub ahead of print, 2015*

*Lewis JS Jr., Chernock RD. Human papillomavirus and Epstein-Barr virus in head and neck carcinomas – suggestions for the new WHO Classification. Head Neck Pathol. 8(1):50-8, 2015*

*Amacher, AM, Goyal, B, Lewis, JS Jr., El-Mofty, SK, Chernock, RD. Prevalence of a hobnail pattern in papillary, poorly differentiated, and anaplastic thyroid carcinoma: a possible manifestation of high-grade transformation. Am J Surg Pathol, 39(2), 260-5, 2015*

*Lewis, JS Jr., Chernock, RD, Haynes, W, El-Mofty, SK. Low-grade Papillary Schneiderian Carcinoma, a Unique and Deceptively Bland Malignant Neoplasm: Report of a Case. Am J Surg Pathol, 39(5), 714-21, 2015*

*Patel KR, Chernock RD, Sinha P, Muller S, El-Mofty SK, Lewis, JS Jr. Verrucous carcinoma with dysplasia or minimal invasion – A variant of verrucous carcinoma with extremely favorable prognosis. Head Neck Pathol 1(9):65-73, 2015.*

*Cai C, Chernock RD, Pittman ME, El-Mofty SK, Thorstad WL, Lewis JS Jr. Keratinizing-type squamous cell carcinoma of the oropharynx – p16 overexpression is associated with positive high risk HPV status and improved survival. Am J Surg Pathol 38(6):809-15, 2014*

VPLS provides detailed collection and transport protocols to help insure that tissue samples arrive at our laboratory in an acceptable condition for analysis. Our faculty consultants provide an integrated diagnostic report of all studies performed. VPLS provides your institution with all the necessary collection and transport supplies, reporting, billing and customer support services to facilitate your specimen referrals to Vanderbilt.

For more information on available services, please call VPLS at 1-800-551-5227, or visit on-line at: [www.labVU.com](http://www.labVU.com)